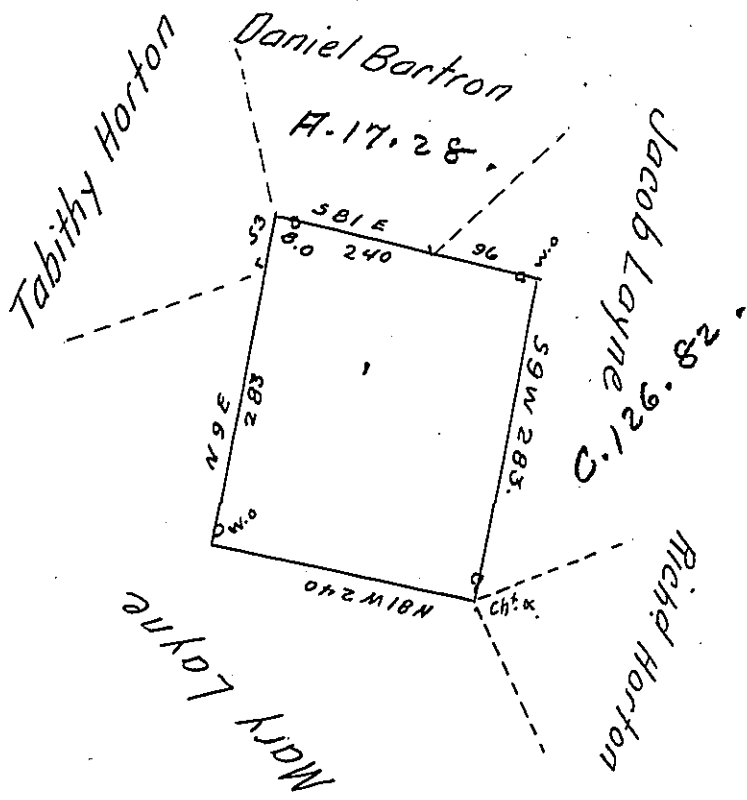


Porter-
PIKE.



In pursuance of a Warrant Issued the 22nd day of August 1793
 Surveyed the 20th September 1817 the above described tract -
 land to John McLaughlin from an Original Survey Situate
 on the head of an Easterly branch of Brodheads Creek in
 Middle Smithfield and Delaware Townships (late Northampton
 now) Pike County, Containing four hundred Acres and Seventy
 five perches. And the Allowance of Six p. Cent.

To Richard T. Leech Esquire } Jn^o Brink D. S.
 Surveyor General of Penn^a }

IN TESTIMONY that the above is a copy of the original remaining on file in
 the Department of Internal Affairs of Pennsylvania, made
 conformably to an Act of Assembly approved the 16th day of
 February, 1833, I have hereunto set my Hand and caused
 the Seal of said Department to be affixed at Harrisburg,
 this eighteenth day of December 1905.

James R. Brown
 Secretary of Internal Affairs.